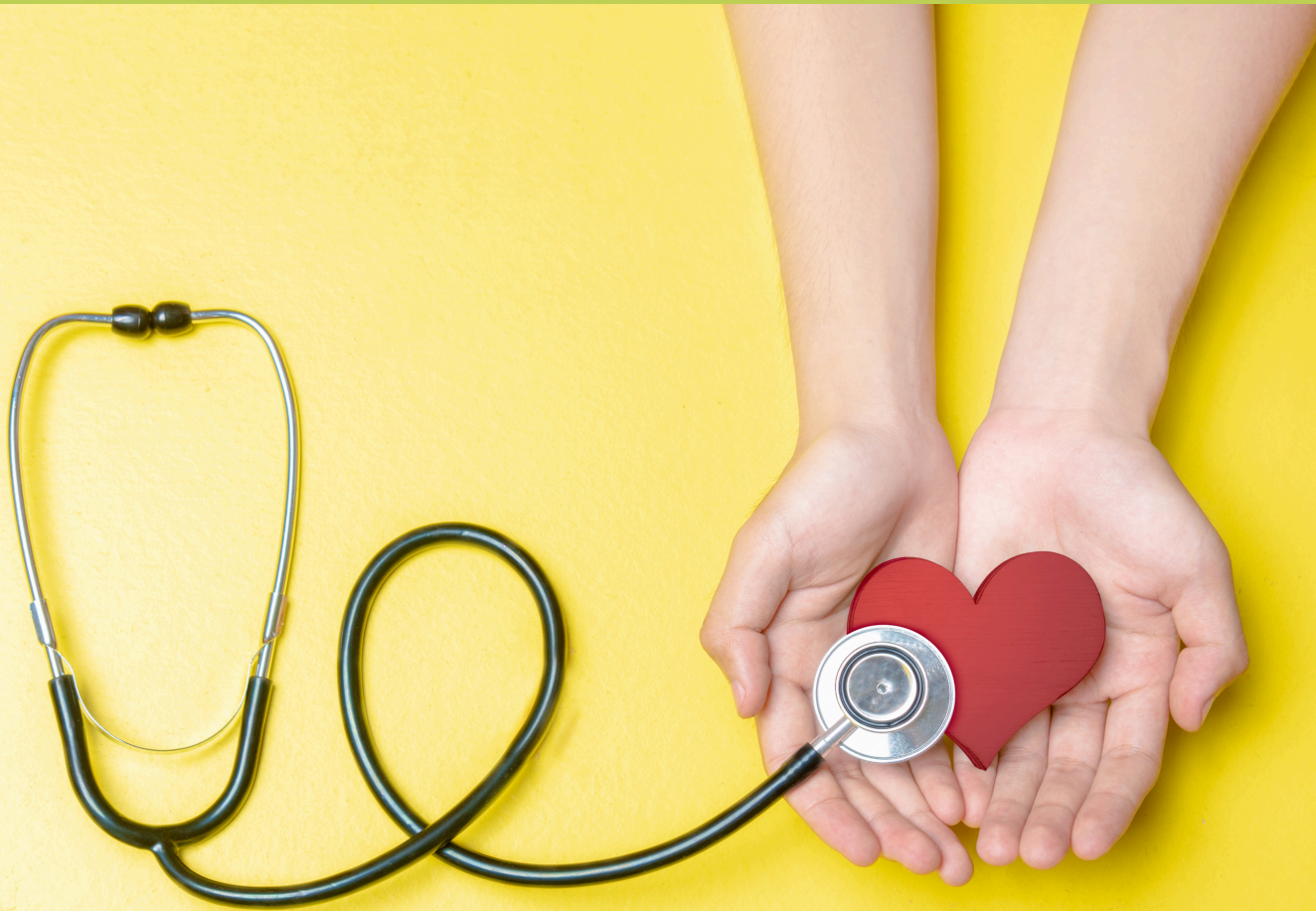


North Shields North Tyneside Primary Care Network

Learning Disability Support Service
Progress Report
April 2024 - March 2025



Data 2024- 2025

106

Patients supported to attend health appointments



1458

Contacts with patients

166

Health appointments arranged



51

Patients supported with pre-breast screening support



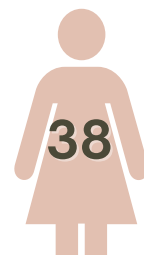
49

Face to Face support sessions to support with bowel screening



38

Cervical screening-face to face support



273

Annual Health Reviews arranged



34

Bowel screening appointments arranged



7

Patients supported to attend breast screening



23

Patients supported to attend Annual Health Checks



45

Home visits and face to face consultations completed



217

Referrals to additional health services such as OT, podiatry, dentistry, hospital support etc.



169

Easy Read resources distributed



297

Reasonable adjustments implemented for patients

481

Tasks completed

81

Referrals to organisations such as social prescribing, health educational programmes & voluntary organisations



Annual Health Review Data

82%

Collingwood Surgery

89%

Nelson Medical Group

91%

Redburn Park Medical Group

85%

Spring Terrace Health Centre

80%

Priory Medical Group
